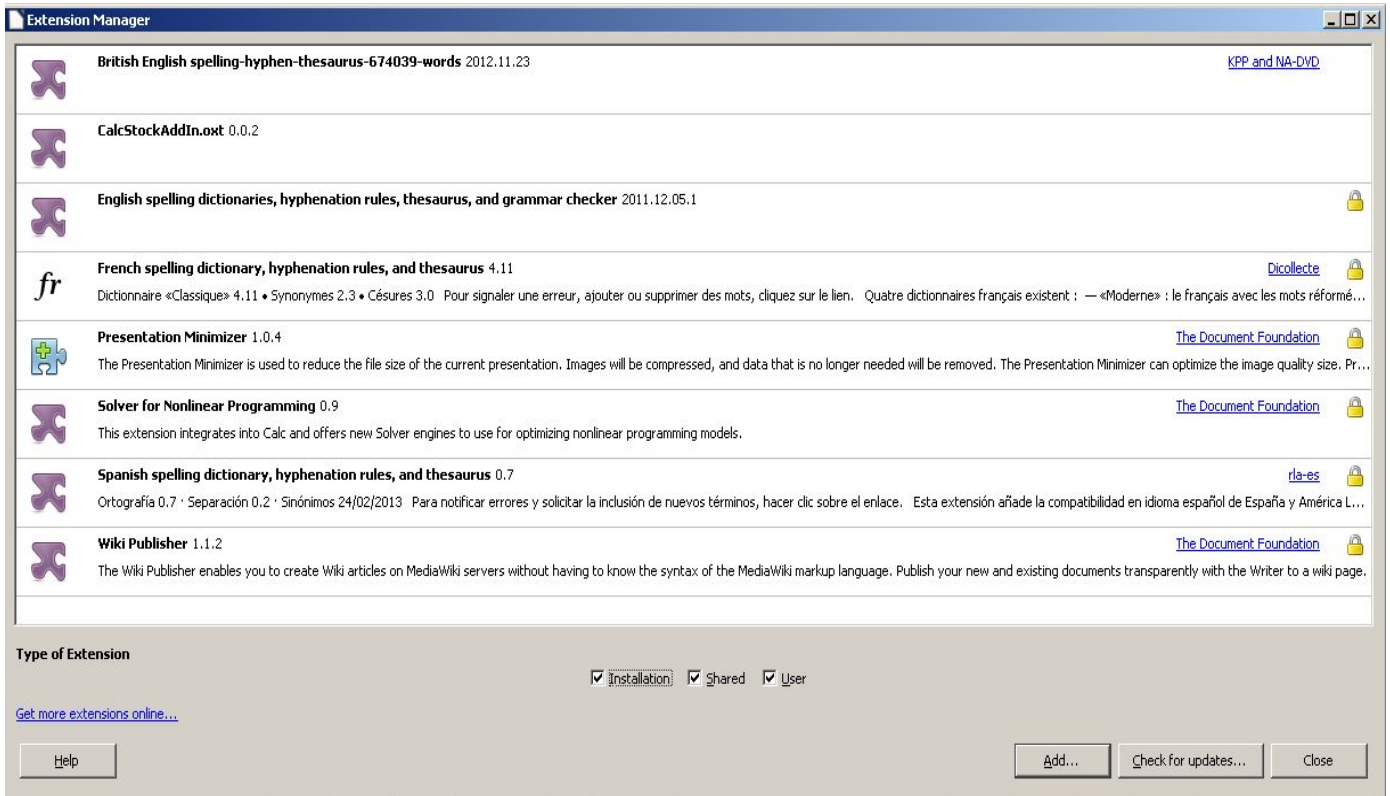
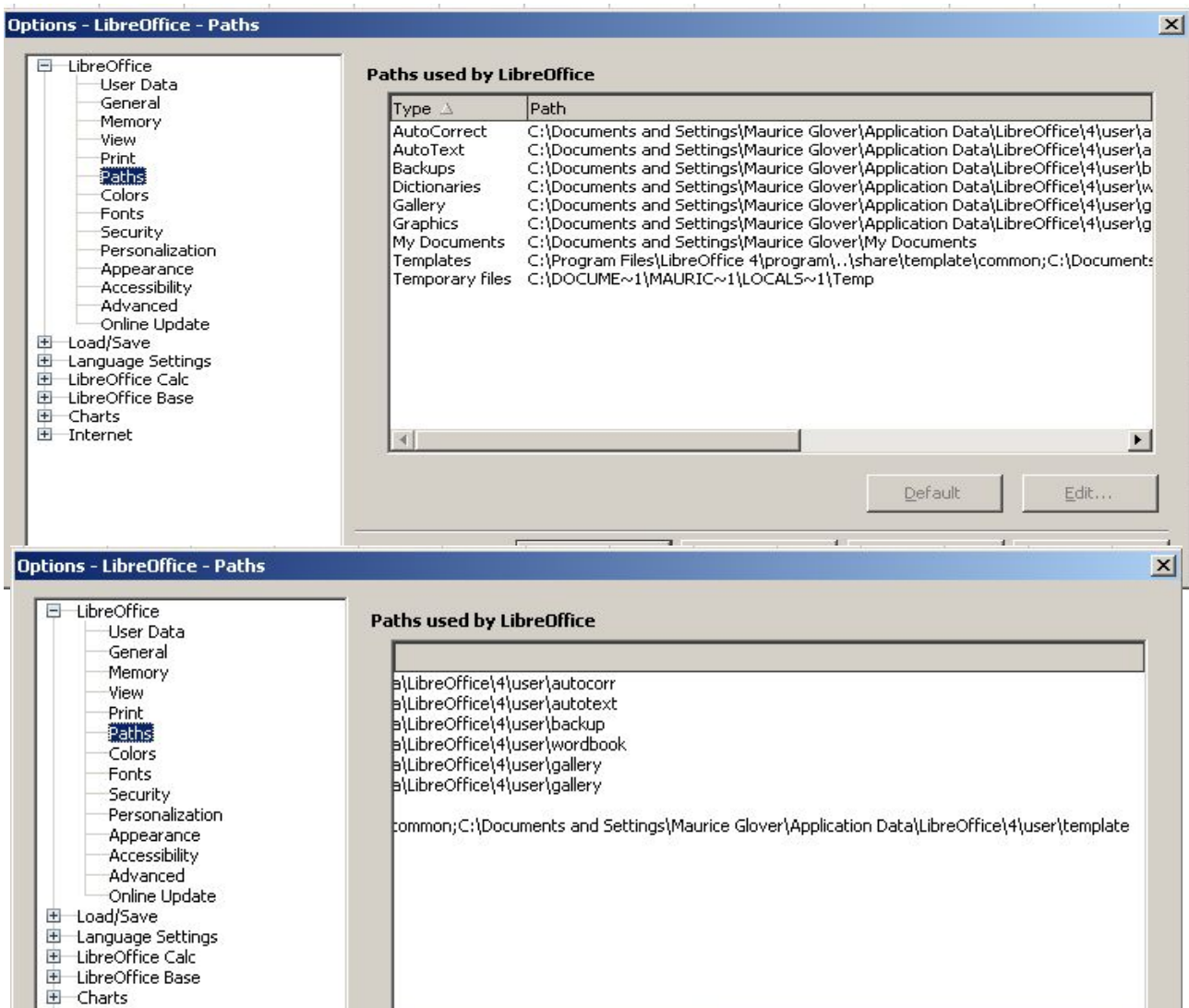


Here is a shot of the Tool-extension manager



And here are shots of Tool-Options-Libreoffice-Paths



When I had pressed OK to the "JRE is Defective" message it did not crash immediately but as soon as I tried to put in an "=" formula, up popped the message again. I then pressed the ESC key and up popped the "Runtime Error!":

Program:

This application has requested the runtime to terminate in an unusual way. Please contact the application's support team for morfe information".

I then pressed Okay and it automatically and instantaneously closed Libreoffice.

I recovered the spreadsheet and sods law but I can't now get it to crash.

